



**HYDROPOOL**

hot tubs • swim spas

[hydropoolhottubs.com](http://hydropoolhottubs.com)

**The Water Is Calling**  
**2024 HOT TUB GUIDE**



COVER IMAGE COURTESY OF CK SPAS LOCATION SAINT EUSTACHE QUEBEC

# *WELCOME TO HYDROPOOL*

THE PACE OF LIFE HAS MADE IT INCREDIBLY  
DIFFICULT TO STAY CONNECTED.

That's why we engineer our hot tubs and swim spas to unlock the  
power of water, so you can make meaningful connections with family,  
your friends, and yourself.



HYDROPOOL  
hot tubs · swim spas

THE WATER IS CALLING







PHOTO COURTESY OF BONA VISTA LEISURESCAPES, TORONTO, ONTARIO



# WHY BUY A HYDROPOOL HOT TUB?

## **START YOUR DAY OFF RIGHT**

Imagine starting each morning by taking a quick soak in your very own Hydropool Hot Tub. Your blood circulation will improve, your muscles will relax and you'll instantly feel better.

Your state of mind will be enhanced and you will be better prepared for your day at work, to drop off the kids at school or even head straight to the gym.

## **RELIEVE STRESS AND RELAX**

When you're relaxing, life is more enjoyable. It is easier to converse, share intimacies, smile and laugh. You'll look forward to your time in your hot tub. Hydropool Hot Tubs are great for entertaining. Your guests will always leave with fond memories of the time spent with you in your hot tub.

## **SOOTHE THOSE TIRED AND ACHING MUSCLES**

The heat of your Hydropool Hot Tub results in collagen tissue becoming more flexible. This new flexibility benefits many people with arthritic symptoms. Doctors have advised those with arthritis that soaking in warm water several times a day relaxes muscles and joints, and helps induce restful sleep. The resulting stress and muscle tension relief has also led many migraine sufferers to claim that hot tub use reduces the frequency and severity of their headaches.

## **SLEEP BETTER**

The heat of the hot tubs improves blood circulation, provides tension relief and quicker lactic acid removal, creating a comforting state of relaxation and tranquility, which delivers you better sleep at night.

"We call our hot tub 'Hydropool Heaven.' After a long day at the office, it's great coming home to our little piece of heaven."

*Brian & Wendy Chin Quan,  
Proud Hydropool Hot Tub Owner's*



## FOR THE CREATURES OF COMFORT

Once you've submersed yourself in the healing water of a Hydropool Hot Tub, you'll quickly realize that everything has been designed with your comfort in mind. The superior ergonomic design was created to hug your body and provide you with full comfort and support. From our unique, multi-level seating design, right down to the extra-large footwells, you'll see how easy it is to stretch out, relax and enjoy your hot tub. Deep bucket seats, higher cool down seats, comfortable bench seats and body form loungers give everyone a seat that makes them most comfortable. Plush pillows gently support your head and neck while our wide lumbar support seats cradle your body.

We top it all off with a conveniently-placed ice bucket for just the right occasion.

### Ergonomically designed...

- A** Recessed jetting   **B** Spacious footwells



### Built for you...

- C** Never-Float Lounger   **D** Optional Hydropool Ice Bucket Tray







PHOTO COURTESY OF CLAIR AZUR, CANNES, FRANCE



PHOTO COURTESY OF BACKYARD RETREAT, OAKVILLE, ONTARIO

# STATE OF THE ART DESIGN

Hydropool is one of the largest hot tub manufacturers in the world. We are committed to raising the standards of our industry by building superior hot tubs. We utilize the latest technologies with the most current environmental practices. Our research and development team is always striving to be the leading edge of innovation and design.



Our state-of-the-art equipment includes the patented Self-Cleaning™/1 System, HydroWise System, and Automated Wellness Programs with Zone Therapy.



All equipment is built into our self-supporting cradle and truss design that comes with a 10-year worry-free structural guarantee.



Every Hydropool Hot Tub comes with optimized hydraulics and safety steps inside the hot tub.







---

**ZONE THERAPY  
SYSTEM**

---

# LET'S TALK ABOUT WELLNESS

Much like an iceberg, there's a lot going on below the surface of a HydroPool Hot Tub. With a wide variety of scientific contributions to develop our programs, our Zone Therapy has been designed to provide you with a personalized usage map of your hot tub to help you benefit from a general sense of well-being.

Everyone is different and responds in different ways to hydrotherapy. We've created an easy-to-understand summary of the four key elements that make up each zone so you can get the most out of your time in your hot tub.

## KEY ELEMENTS

There are four elements that make up each zone.

### 1. SEATING DESIGNED AROUND YOU

#### BUILT TO WORK WITH YOUR BODY'S NATURAL STRUCTURE

- Provides maximum comfort and functionality.

#### CRADLES YOUR BONE STRUCTURE SO THAT THE MUSCULAR SYSTEM DOESN'T HAVE TO

- Removes stress from your muscles and joints and lets your body relax.

### 2. TYPE OF JETS

#### NO STING JETS

- Designed to produce a high flow low pressure massage.

#### DESIGNED BY MASSAGE EXPERTS

- Whether it is Percussion, Muscle Release or Deep Tissue Jets all jets have been designed for a specific purpose.

### 3. PERSONALIZED MASSAGE

#### JET FLEX

- Change same size jets to suit to tailor your massage.

#### AIR / WATER MIXTURE

- Control the perfect mixture of water and air in the zone.

#### MASSAGE SELECTOR

- Customize the intensity of massage in each zone with the massage selector

### 4. DURATION AND SEQUENCE OF ZONES

#### DURATION

- Time that you spend in each seat of the hot tub can optimize your treatment.

#### SEQUENCE

- Sequence of seats is critical to the performance of the Zone Therapy.



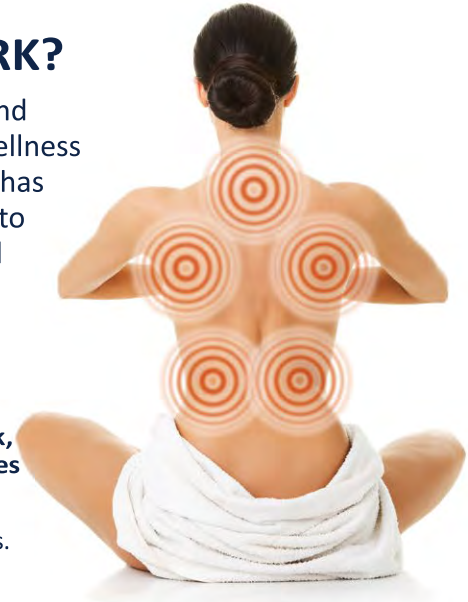
# HOW DOES ZONE THERAPY WORK?

Through our solid understanding of Zone Therapy and ergonomics of the human body, Hydropool has taken wellness to the next level. This constantly evolving innovation has created a line of hot tubs that allows Zone Therapy to interact with the human body in the most natural and effective way possible.



**ZONE 1  
CORE ZONE**  
Activation of the muscles that support the back.  
 • Designed to relieve spine fatigue which causes headaches.

**ZONE 2  
OVERALL BODY ZONE**  
Activation of leg and lumbar muscles  
 • Promote improved circulation in lower parts of the body which allows for increased blood flow and lightens legs.



**ZONE 3  
UPPER BODY ZONE**  
Activation of upper back, neck and shoulder muscles  
 • Eliminates tension in the shoulder and neck muscles.



**ZONE 4  
REFLEXOLOGY ZONE**  
Activation of foot arch muscles  
 • Designed to deeply massage the small venous areas in your foot arch.

## HOT TUB ZONES

- ZONE 1**  
Core Zone
- ZONE 4**  
Reflexology
- ZONE 3**  
Upper Body
- ZONE 2**  
Overall Body



## IMMERSION THERAPY

- COLOR THERAPY**
- COLOR THERAPY**
- COLOR THERAPY**
- COLOR THERAPY**
- AIR THERAPY**



PHOTO COURTESY OF BENINATI POOLS, UTICA, MICHIGAN



# OUR CUSTOMIZED WELLNESS PROGRAMS

One of the most powerful benefits of revolving your life around water is hydrotherapy. Hydropool has been innovating in this area for over 40 years and has developed customized wellness programs designed to help our customers with whatever ails them. Our easy-to-use topside controls allow you to achieve desired results, all at the touch of a button.



## 1. LEG PAIN TREATMENT PROGRAM

**25 Minute Program that uses Zones 1, 2, 4**

- Targeting core leg muscles to massage tightness and soothe joints.
- We recommend adding optional Air Therapy and our DreamScent Aromatherapy with scents like Bergamot & Lemongrass or Tangerine & Grapefruit.



## 2. DIET BOOST TREATMENT PROGRAM

**30 Minute Program that uses Zones 1,2,3**

- Compliment with a healthy eating plan.
- We recommend our DreamScent Aromatherapy with scents like Tangerine & Grapefruit.



## 3. HEADACHE TREATMENT PROGRAM

**20 Minute Program uses Zones 1,2,3**

- Targets neck and shoulder muscle that play a critical role in easing head pain.
- We recommend adding optional Air Therapy and our DreamScent Aromatherapy with scents like Ylang Ylang or Tangerine.



## 4. STRESS TREATMENT PROGRAM

**Our 25 Minute Program uses Zones 2 and 3.**

- We recommend adding our DreamScent Aromatherapy with scents like Bergamot & Lemongrass or Ylang Ylang.



## 5. BACK PAIN TREATMENT PROGRAM

**25 Minute Program that uses Zones 1, 2, 3**

- Targets both upper and lower back muscles to massage away tightness.
- We recommend adding our DreamScent Aromatherapy with scents like Ginger or Spearmint & Eucalyptus.



## 6. SPORTS RECOVERY TREATMENT PROGRAM

**35 Minute Program uses Zones 1,2,4 to help you get back on your feet.**

- Quick recovery from your training has been proven to increase performance.
- We recommend adding optional Air Therapy and our DreamScent Aromatherapy with scents like Spearmint & Eucalyptus or Ginger.



## 7. INSOMNIA TREATMENT PROGRAM

**20 Minute Program uses Zones 2,3,1 that relax and soothe muscles and mind.**

- A good sleep is critical to a healthy and productive life.
- We recommend adding our DreamScent Aromatherapy with scents like Chamomile or Bergamot & Lemongrass.



## 8. FULL BODY AWAKENING TREATMENT PROGRAM

**10 Minute Program that uses Zones 1 and 2.**

- Awaken all your senses.
- We recommend adding optional Air Therapy and our DreamScent Aromatherapy with scents like Ginger or Ylang Ylang.

HYDROPOOL EXCLUSIVE FEATURE



## SIGNATURE **SELF-CLEANING**<sup>TM+</sup> TECHNOLOGY

We know that one of the biggest challenges for our customers is the time they need to set aside for maintenance. Now, with our patented **SELF-CLEANING**<sup>TM+</sup> technology, Hydropool hot tubs clean<sup>+</sup> more so you clean less.

The **SELF-CLEANING**<sup>TM+</sup> System cleans 100% of the water in only 10 minutes. That's an incredible twelve times in two hours! This is not your run of the mill hot tub vacuum.

**It's an intricate and innovative cleaning<sup>+</sup> system using multiple technologies to clean<sup>+</sup> the water.**

Hydropool has developed the Quick Drain System that uses the No Sump Pump system. It simply pumps the hot tub water out to any distance or grade, saving you tons of time, and eliminates the hassle associated with hot tub maintenance.



## 1. HYDROCLEAN<sup>+</sup> FILTRATION JETS OPTIMIZED SURFACE FILTRATION

- Strategically placed jets create a continuous flow of water around the hot tub.
- Pushes all floating debris towards the High Flow Skimmer.

### HIGH FLOW SKIMMER

Removes floating debris, extending the life of the filter.

## 2. FAST FLOW FILTER CLEANER<sup>+</sup> WATER FASTER

- Removes Oils, Soaps & Lotions.
- Protects the pumps & heater.

## 3. HYDROCLEAN<sup>+</sup> FLOOR VACUUM KEEPS THE FLOOR CLEAN<sup>+</sup>

- Built in Floor Vacuum - No need to Vacuum the hot tub.
- Circulates watercare products more effectively.
- Part of our Quick Drain System.

## 4. PUREWATER SYSTEM ALL NATURAL SYSTEM

- Designed to keep your Hydropool Hot Tub water clean<sup>+</sup> and clear the way nature intended.
- Preventative system designed to prevent problems from happening.

## 5. PRESSURIZED MICRO-FILTRATION CLEANS<sup>+</sup> 100% OF THE WATER EVERY 10 MINUTES

- Designed to polish the water filtering the smallest of particles.
- Microban protection helps to prevent the growth of bacteria in the filter area.
- Easy to access, easy to clean.

## 6. WATERCARE SYSTEM WORRY-FREE & CONVENIENT

- Strategically placed where the dirt and debris accumulate.
- Easy to use and out of sight.

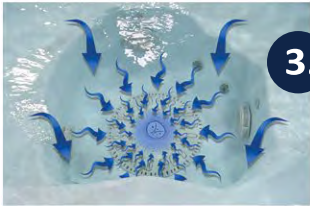




PHOTO COURTESY OF HYDROPOOL SWEDEN, STOCKHOLM, SWEDEN





# MADE IN CANADA FOR CANADIAN WINTERS



At Hydropool, our world is our water. We not only engineer our hot tubs to care for water, clean<sup>†</sup> it and preserve it for generations to come but our commitment to a healthy planet extends beyond water.

One of the most frequent questions we're asked is about the cost of keeping your hot tub at those ideal temperatures (around 100° F/37° C).

Thanks to our innovative HydroWise Energy Efficient Insulation and our superior 4 inch Everlast Thermal Cover, we've mastered the art of keeping the heat in and the cold out. Combine this with the fact that our hot tubs are engineered to be the most energy efficient in the world. Meaning, you can enjoy your hot tub for just pennies a day.

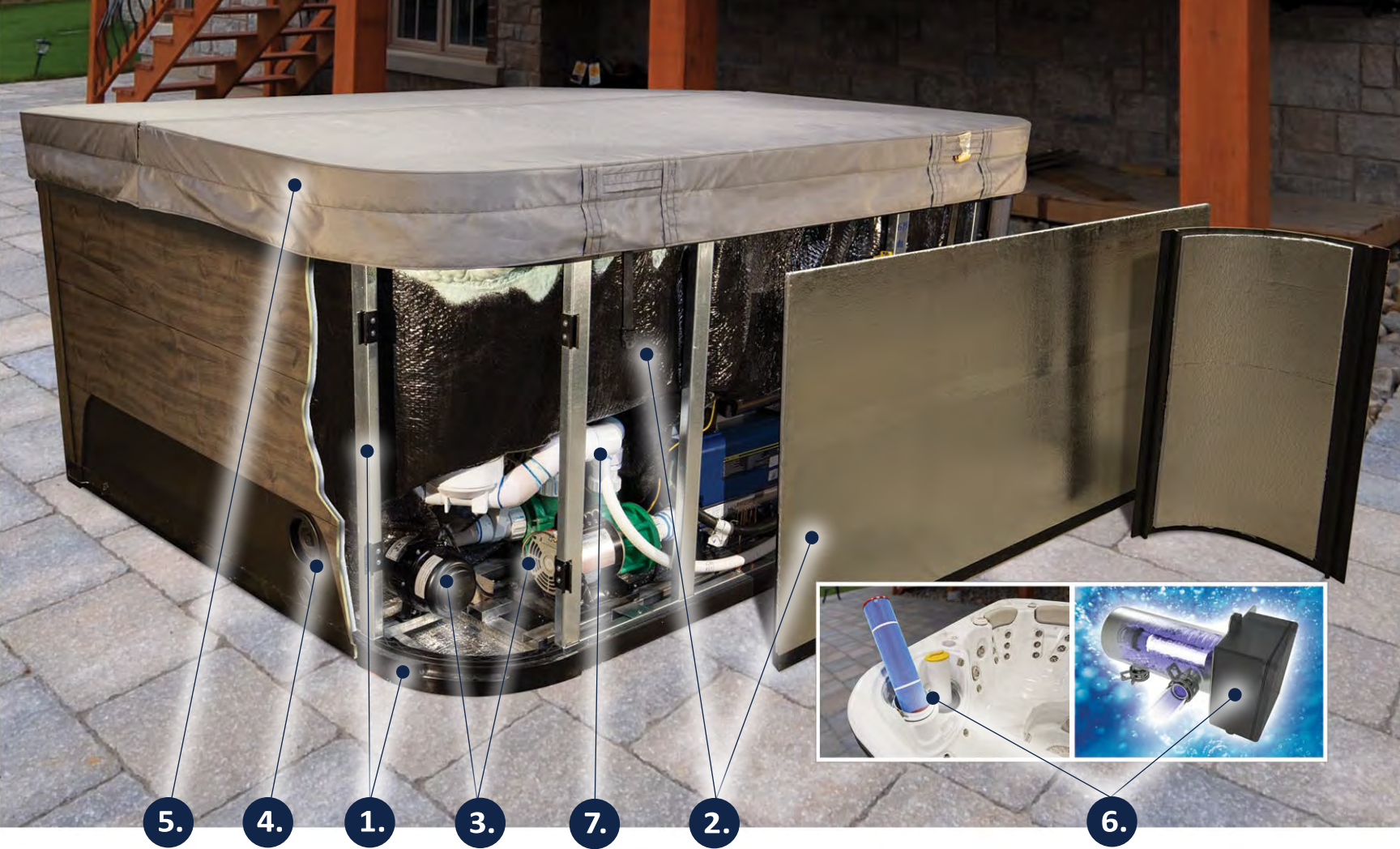


***We have always been developing new ways to better our energy efficiency...***

**1980** Engineered the first Self-Cleaning System to better energy efficiency.

**1981** Spray Foam insulation on shell to improve energy efficiency.





### 1. EVERLAST STEEL FRAME & PRO POLYMER BASE STRONGEST FRAME IN THE INDUSTRY

- Galvanized steel frame – No Rust – No Rot
- Fully sealed base to lock the heat in keep the cold out.

### 2. HYDROWISE TRIPLE THERMAL SHIELD SAVING YOU MONEY

- NASA Technology - Reflects the residual heat of the pumps, shell and plumbing back into the hot tub.
- Heater does not need to turn on as often, saving you money.
- Ranked as one of the most energy efficient hot tubs in the world by the state of California. Please Consult our HydroWise Energy Guide.

### 3. HYBRID HEATING AMBIENT HEAT

- Each pump creates 1.5 kw of waste free heat.
- Heater doesn't have to turn on as often to heat your hot tub.

### 4. ECOHEAT EXCHANGE TECHNOLOGY GREAT FOR ANY SEASON

- Help control the temperature of the hot tub without the heater ever coming on.
- The fully adjustable HydroWise Thermal Vents maximize energy efficiency for any season and any climate.

### 5. EVERLAST THERMAL COVER MADE FOR CANADIAN WINTERS

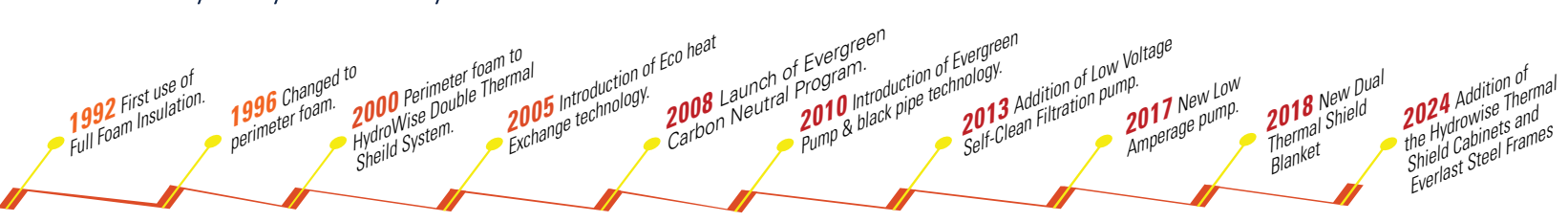
- Heavy duty tapered locking safety hard cover
- Most energy efficient hardcover in the industry.
- Locks on both sides to keep animals out and children safe.

### 6. SELF-CLEANING™+ TECHNOLOGY DESIGNED TO EXTEND YOUR WATER LIFE

- **COMMERCIAL GRADE FILTRATION** cleans† 100 percent of the water in only ten minutes.
- **PUREWATER SYSTEM** Designed to keep your Hydropool Hot Tub water clean† and clear the way nature intended.
- Cleaner Water Faster.

### 7. HEAT PUMP BYPASS TECHNOLOGY OPTION ECO FRIENDLY HEATING OPTION

- Energy Efficient.
- **Dual Functionality**  
Heat in the Winter / Cool in the Summer
- Save money



**1992** First use of Full Foam Insulation.

**1996** Changed to perimeter foam.

**2000** Perimeter foam to HydroWise Double Thermal Shield System.

**2005** Introduction of Eco heat Exchange technology.

**2008** Launch of Evergreen Carbon Neutral Program.

**2010** Introduction of Evergreen Pump & black pipe technology.

**2013** Addition of Evergreen Self-Clean Filtration pump.


**2017** New Low Amperage pump.

**2018** New Dual Thermal Shield Blanket

**2024** Addition of the HydroWise Thermal Shield Cabinets and Everlast Steel Frames





A photograph of a person's arm reaching into a body of water at sunset. The sun is low on the horizon, creating a warm, golden glow. The water is dark blue with ripples. A dark blue rectangular box is overlaid on the center of the image, containing white text. The text is centered and reads: "NOTHING IS SOFTER OR STRONGER THAN WATER THAT IS OUR SIGNATURE". There are two horizontal lines, one above and one below the text.

NOTHING IS  
SOFTER OR  
STRONGER  
THAN WATER  
THAT IS OUR  
SIGNATURE

# SIGNATURE COLLECTION

## **SELF-CLEANING™†**

### IF ONLY IT COULD CLEAN THE HOUSE, TOO!

The Signature Collection is the culmination of 40 years of Hydropool innovation as an industry leader. A host of exclusive features gives you the ultimate Hot Tub experience with unique hydrotherapy massage and wellness programs, a **SELF-CLEANING™†** System, and money-saving energy efficiency. With eight spa models to choose from and a wealth of finishing options, you'll find a hot tub that fits your space and style.



# AT A GLANCE

## MODEL 379



**GOLD SERIES:**  
30" DEEP MODEL:  
SEATING: 3 Person  
TOTAL THERAPY JETS: 31

37" DEEP MODEL:  
SEATING: 3 Person  
TOTAL THERAPY JETS: 31

## MODEL 455



37" DEEP MODEL:  
SEATING: 4 Person  
**GOLD SERIES:**  
TOTAL THERAPY JETS: 33  
**PLATINUM SERIES:**  
TOTAL THERAPY JETS: 40

## MODEL 579



37" DEEP MODEL:  
SEATING: 4-5 Person  
**GOLD SERIES:**  
TOTAL THERAPY JETS: 34  
**PLATINUM SERIES:**  
TOTAL THERAPY JETS: 41

## MODEL 679



39" DEEP MODEL:  
SEATING: 5-6 Person  
**GOLD SERIES:**  
TOTAL THERAPY JETS: 39  
**PLATINUM SERIES:**  
TOTAL THERAPY JETS: 53

## MODEL 655



39" DEEP MODEL:  
SEATING: 5-6 Person  
**GOLD SERIES:**  
TOTAL THERAPY JETS: 40  
**PLATINUM SERIES:**  
TOTAL THERAPY JETS: 50

## MODEL 728



39" DEEP MODEL:  
SEATING: 6-7 Person  
**PLATINUM SERIES:**  
TOTAL THERAPY JETS: 51

## MODEL 779



39" DEEP MODEL:  
SEATING: 6-7 Person  
**PLATINUM SERIES:**  
TOTAL THERAPY JETS: 55

## MODEL 799



39" DEEP MODEL:  
SEATING: 6-8 Person  
**PLATINUM SERIES:**  
TOTAL THERAPY JETS: 64

# WHAT YOU SHOULD KNOW ABOUT HYDROPOOL HOT TUBS

## WHAT IS RIGHT FOR YOU? GOLD SERIES VS PLATINUM SERIES SIGNATURE HOT TUBS



**SIGNATURE 579 GOLD SERIES**



**SIGNATURE 579 PLATINUM SERIES**

The Gold series allows people exceptional value and a great massage and features our patented **SELF-CLEANING** System. The Platinum series offers exceptional massage and automated luxurious massage programs from larger and more diversified jetting.

**SIGNATURE  
579 GOLD**

34 

1 

**SIGNATURE  
679 GOLD**

39 

1 

**SIGNATURE  
579 PLATINUM**

41 

PLUS Hydrother  
Wellness Programs

2 

**SIGNATURE  
679 PLATINUM**

53 

PLUS Hydrother  
Wellness Programs

2 

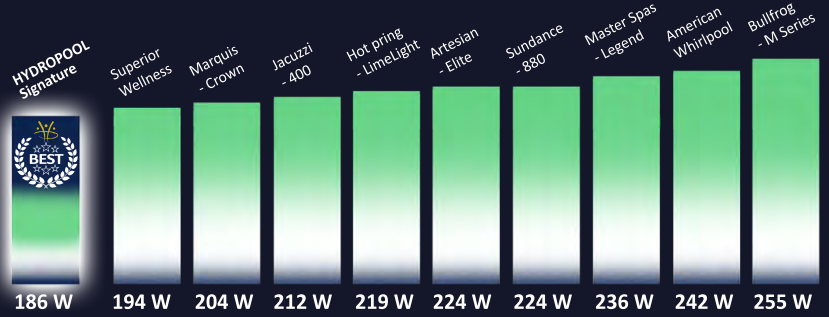


# WE ARE BEST IN CLASS WHEN COMES TO ENERGY EFFICIENCY

Thanks to our innovative HydroWise Energy Efficient Insulation and our superior 4 inch Everlast Thermal Cover, we've mastered the art of keeping the heat in and the cold out. Combine this with the fact that our hot tubs are engineered to be the most energy efficient in the world. Meaning, you can enjoy your hot tub for just pennies a day.



## HERE'S HOW HYDROPOOL SIGNATURE **SELF-CLEANING™** HOT TUBS COMPARE



On average you will use up to **27% less energy** when compared to other leading brands\*

## HERE'S HOW HYDROPOOL SERENITY HOT TUBS COMPARE



On average you will use up to **17% less energy** when compared to other leading brands\*

\* Energy calculations based on data compiled by the state of California and US Energy Information Administration.

### Keep in mind these levels to understand just how loud these hot tubs are in comparison.

Loud Rock Concert.....	115dB
City Traffic (inside car).....	85dB
Telephone dial tone.....	80dB
Normal conversation .....	60-65dB
Dishwasher Appliance.....	50dB
Whisper Quiet Library.....	30dB

**LOW**  
(Circulation & Self-Clean Mode On)  
**SOUND LEVEL AT 3 FT.:**  
**41 dB**

**HIGH**  
(All Pumps On)  
**SOUND LEVEL AT 3 FT.:**  
**58.1 dB**

## OUR ULTRA QUIET OPERATION

HydroPool Hot Tubs are renowned for their ultra quiet operation, and this is due to their insulative properties. This insulation not only helps make them energy efficient, but it also traps and deadens sound energy which prevents any disruptive noise from reaching your oasis of relaxation.

**LOW**  
(Circulation & SelfClean Mode On)  
**SOUND LEVEL AT 20 FT.:**  
**39.8 dB**

**HIGH**  
(All Pumps On)  
**SOUND LEVEL AT 20 FT.:**  
**51.7 dB**

## HYDROPOOL SIGNATURE HOT TUB

Equipment behind Insulation, **SELF-CLEANING** Floor Vacuum with Optimized Surface Filtration.



## SIGNATURE *SELF-CLEANING*™ 379

Superior in style and function. With room for up to three adults, the Signature 379 Hot Tub offers a low profile that makes it simple to enter and exit the tub. This compact hot tub fits perfectly into a corner of a cozy patio. With seats that offer a variety of unique jet formations, you can relieve tired muscles, ease stress and release tension every day. A multi-coloured LED footwell also adds ambiance to your hydrotherapy experience.

Model 379 Gold in Silver Marble shown here.  
\* +/- tolerance of 1/4"

### 30" DEEP MODEL SPECS.

**SEATING:** 3 Person  
**DIMENSIONS:** 84" x 65" x 30"\*  
(213.36 cm x 165.1 cm x 76.2 cm)\*  
**SPA VOLUME:** 195 US gal / 738 L  
**DRY WEIGHT:** 650 lbs / 295 kg  
**FILLED WEIGHT:** 2,277 lbs / 1,033 kg

### 36.5" DEEP MODEL SPECS.

**SEATING:** 3 Person  
**DIMENSIONS:** 84" x 65" x 36.5"\*  
(213.36 cm x 165.1 cm x 92.71 cm)\*  
**SPA VOLUME:** 204 US gal / 772 L  
**DRY WEIGHT:** 693 lbs / 314 kg  
**FILLED WEIGHT:** 2,394 lbs / 1,086 kg

**JETS: GOLD:** 31 Therapeutic Adjustable Jets  
**ELECTRICAL:** 240v - 40A NA / 230V - 20A EU  
**HEATING:** 4kw - NA / 3Kw - EU  
**PUMPS:** 4HPR NA 60hz / 4HPR 50HZ  
**INTERIOR LIGHTING:** Standard Multi-Colored LED  
**PUREWATER AOP:** Standard UVC / Ozone AOP

### HYDROPOOL HYDROGUIDE

#### ESTIMATED MONTHLY ELECTRICAL COSTS:

CANADA*	USA*	UK*	EUROPE*
\$7.91 - \$18.07	\$9.51 - \$21.07	£19.03 - £42.14	€16.22 - €35.92

\*Range based on a spa set point of 100°F/38°C, air temperature 45°F/7°C or 75°F/24°C. The cost is calculated using \$0.138 CDN, \$0.159 USD, £0.333, €0.283 cost per KWH calculations based on data compiled using CEC Title 20 test reports. The actual Monthly Cost will vary from these totals depending on variety of factors.

Model 379 not exactly as shown here.



## SIGNATURE *SELF-CLEANING*™ 455

The absolute best hot tub ownership experience in a small four-person package. The Signature 455 Hot Tub offers the ultimate in energy efficiency and is combined with our wellness programs and our science of immersion. It is, without a doubt, the best hydrotherapy experience in a hot tub.

Model 455 Platinum in Silver Marble shown here.  
\* +/- tolerance of 1/4"

### 37" DEEP MODEL SPECS.

**SEATING:** 4 Person  
**DIMENSIONS:** 80" x 80" x 36.5"\*  
(203.2 cm x 203.2 cm x 92.71 cm)\*  
**SPA VOLUME:** 274 US gal / 1,039 L  
**DRY WEIGHT:** 735 lbs / 333 kg  
**FILLED WEIGHT:** 3,024 lbs / 1,372 kg  
**JETS: GOLD:** 33 Therapeutic Adjustable Jets  
**PLATINUM:** 40 Therapeutic Adjustable Jets  
**ELECTRICAL: GOLD:** 240v - 40A NA / 230V - 20A EU  
**PLATINUM:** 240v - 50A NA / 230V - 32A EU  
**HEATING: GOLD:** 4Kw NA / 3Kw EU  
**PLATINUM:** 4Kw NA / 3Kw EU  
**PUMPS: GOLD:** 4hp NA (60Hz) & EU (50Hz)  
**PLATINUM:** 3hp & 4hp NA (60Hz) & EU (50Hz)  
**INTERIOR LIGHTING:** Standard Multi-Colored LED  
**PUREWATER AOP:** Standard UVC / Ozone AOP

### HYDROPOOL HYDROGUIDE

#### ESTIMATED MONTHLY ELECTRICAL COSTS:

CANADA*	USA*	UK*	EUROPE*
\$8.17 - \$18.07	\$9.82 - \$21.74	£19.65 - £43.48	€16.75 - €37.06

\*Range based on a spa set point of 100°F/38°C, air temperature 45°F/7°C or 75°F/24°C. The cost is calculated using \$0.138 CDN, \$0.159 USD, £0.333, €0.283 cost per KWH calculations based on data compiled using CEC Title 20 test reports. The actual Monthly Cost will vary from these totals depending on variety of factors.



PHOTO COURTESY OF THE HOT TUB STORE & MORE, WAYNESVILLE, NORTH CAROLINA, USA



PHOTO COURTESY OF LONDON ESSEX HOT TUBS, LONDON, ENGLAND



## SIGNATURE **SELF-CLEANING**™<sup>†</sup> 579

The 579 Signature Hot Tub incorporates a Never-Float Lounger and four full seats that hug your body. Easy entry access through non-slip steps built right into the interior helps you quickly slide into your tub. This is one of our best-selling spas. It's perfect for the needs of two people, who want to be able to entertain more. With its spacious interior and multi-level seating, this roomy hot tub is enough to treat you and four friends like royalty. Its European styling makes it a beautiful addition to anyone's castle. Our exclusively designed zoned jetting delivers a balanced, soothing massage and a rejuvenating hot tub experience.

Model 579 Platinum in Silver Marble shown here.  
\* +/- tolerance of 1/4"

### 37" DEEP MODEL SPECS.

- SEATING:** 4-5 Person
- DIMENSIONS:** 80" x 80" x 36.5"\*  
(203.2 cm x 203.2 cm x 92.71 cm) \*
- SPA VOLUME:** 254 US gal / 961 L
- DRY WEIGHT:** 780 lbs / 354 kg
- FILLED WEIGHT:** 2,898 lbs / 1,315 kg
- JETS: GOLD:** 34 Therapeutic Adjustable Jets
- PLATINUM:** 41 Therapeutic Adjustable Jets
- ELECTRICAL: GOLD:** 240v - 40A NA / 230V - 20A EU
- PLATINUM:** 240v - 50A NA / 230V - 32A EU
- HEATING: GOLD:** 4Kw NA / 3Kw EU
- PLATINUM:** 4Kw NA / 3Kw EU
- PUMPS: GOLD:** 4hp NA (60Hz) & EU (50Hz)
- PLATINUM:** 3hp & 4hp NA (60Hz) & EU (50Hz)
- INTERIOR LIGHTING:** Standard Multi-Colored LED
- PUREWATER AOP:** Standard UVC / Ozone AOP

### HYDROPOOL HYDROGUIDE

#### ESTIMATED MONTHLY ELECTRICAL COSTS:

CANADA*	USA*	UK*	EUROPE*
\$8.40 - \$20.78	\$10.10 - \$24.99	£20.20 - £49.98	€17.22 - €42.61

\*Range based on a spa set point of 100°F/38°C, air temperature 45°F/7°C or 75°F/24°C. The cost is calculated using \$0.138 CDN, \$0.159 USD, £0.333, €0.283 cost per KWH calculations based on data compiled using CEC Title 20 test reports. The actual Monthly Cost will vary from these totals depending on variety of factors.



## SIGNATURE **SELF-CLEANING**™<sup>†</sup> 679

Both design and performance, the Signature 679 Hot Tub features Thermal Shield Insulation Technology, Zone Therapy with Wellness Programs, and much more. Our six-person contemporary design and innovations like the Hydrother Program are perfect for those who want the very best in Hydrotherapy technology.

Model 679 Platinum in Silver Marble shown here.  
\* +/- tolerance of 1/4"

### 39" DEEP MODEL SPECS.

- SEATING:** 5-6 Person
- DIMENSIONS:** 84" x 84" x 39"\*  
(213.36 cm x 213.36 cm x 99.06 cm) \*
- SPA VOLUME:** 304 US gal / 1,150 L
- DRY WEIGHT:** 860 lbs / 390 kg
- FILLED WEIGHT:** 3,394 lbs / 1,540 kg
- JETS: GOLD:** 39 Therapeutic Adjustable Jets
- PLATINUM:** 53 Therapeutic Adjustable Jets
- ELECTRICAL: GOLD:** 240v - 40A NA / 230V - 20A EU
- PLATINUM:** 240v - 50A NA / 230V - 32A EU
- HEATING: GOLD:** 4Kw NA / 3Kw EU
- PLATINUM:** 4Kw NA / 3Kw EU
- PUMPS: GOLD:** 4hp NA (60Hz) & EU (50Hz)
- PLATINUM:** 3hp & 4hp NA (60Hz) & EU (50Hz)
- INTERIOR LIGHTING:** Standard Multi-Colored LED
- PUREWATER AOP:** Standard UVC / Ozone AOP

### HYDROPOOL HYDROGUIDE

#### ESTIMATED MONTHLY ELECTRICAL COSTS:

CANADA*	USA*	UK*	EUROPE*
\$9.77 - \$21.62	\$11.75 - \$26.01	£23.50 - £52.01	€20.03 - €44.34

\*Range based on a spa set point of 100°F/38°C, air temperature 45°F/7°C or 75°F/24°C. The cost is calculated using \$0.138 CDN, \$0.159 USD, £0.333, €0.283 cost per KWH calculations based on data compiled using CEC Title 20 test reports. The actual Monthly Cost will vary from these totals depending on variety of factors.





PHOTO COURTESY OF CK SPAS, QUEBEC, CANADA



PHOTO COURTESY OF BACKYARD RETREAT, OAKVILLE, ONTARIO



## SIGNATURE **SELF-CLEANING**™+ 655

The ultimate in advanced relaxation, the Signature 655 Hot Tub has modern styling, multi-color LED lighting and an S-Shaped Immersion Lounger that allows you to sink into the ambience. With expansive barrier-free seating for up to six people, everyone has room to totally relax. This hot tub is the complete hydrotherapy experience.

Model 655 Platinum in Silver Marble shown here.  
\* +/- tolerance of 1/4"

### 39" DEEP MODEL SPECS.

**SEATING:** 5-6 Person  
**DIMENSIONS:** 84" x 84" x 39"\*  
 (213.36 cm x 213.36 cm x 99.06 cm) \*  
**SPA VOLUME:** 321 US gal / 1,215 L  
**DRY WEIGHT:** 882 lbs / 400 kg  
**FILLED WEIGHT:** 3,559 lbs / 1,615 kg  
**JETS: GOLD:** 40 Therapeutic Adjustable Jets  
**PLATINUM:** 50 Therapeutic Adjustable Jets  
**ELECTRICAL: GOLD:** 240v - 40A NA / 230V - 20A EU  
**PLATINUM:** 240v - 50A NA / 230V - 32A EU  
**HEATING: GOLD:** 4Kw NA / 3Kw EU  
**PLATINUM:** 4Kw NA / 3Kw EU  
**PUMPS: GOLD:** 4hp NA (60Hz) & EU (50Hz)  
**PLATINUM:** 3hp & 4hp NA (60Hz) & EU (50Hz)  
**INTERIOR LIGHTING:** Standard Multi-Colored LED  
**PUREWATER AOP:** Standard UVC / Ozone AOP

### HYDROPOOL HYDROGUIDE

#### ESTIMATED MONTHLY ELECTRICAL COSTS:

CANADA*	USA*	UK*	EUROPE*
\$10.59 - \$23.46	\$12.74 - \$28.22	£25.48 - £56.44	€21.72 - €48.11

\*Range based on a spa set point of 100°F/38°C, air temperature 45°F/7°C or 75°F/24°C. The cost is calculated using \$0.138 CDN, \$0.159 USD, £0.333, €0.283 cost per KWH calculations based on data compiled using CEC Title 20 test reports. The actual Monthly Cost will vary from these totals depending on variety of factors.

Model 655 not exactly as shown here.



## SIGNATURE **SELF-CLEANING**™+ 728

The expansive Signature 728 Hot Tub comfortably seats six - seven people. Everyone has room to enjoy state-of-the-art jets, two hydrotherapy jet pumps, and four zones with patented wellness programs. It's powerful relaxation at its finest.

Model 728 Platinum in Silver Marble shown here.  
\* +/- tolerance of 1/4"

### 39" DEEP MODEL SPECS.

**SEATING:** 6-7 Person  
**DIMENSIONS:** 90" x 90" x 39"\*  
 (228.6 cm x 228.6 cm x 99.06 cm) \*  
**SPA VOLUME:** 391 US gal / 1,480 L  
**DRY WEIGHT:** 900 lbs / 408 kg  
**FILLED WEIGHT:** 4,161 lbs / 1,888 kg  
**JETS: PLATINUM:** 51 Therapeutic Adjustable Jets  
**ELECTRICAL: PLATINUM:** 240v - 50A NA / 230V - 32A EU  
**HEATING: PLATINUM:** 4Kw NA / 3Kw EU  
**PUMPS: PLATINUM:** 3hp & 4hp NA (60Hz) & EU (50Hz)  
**INTERIOR LIGHTING:** Standard Multi-Colored LED  
**PUREWATER AOP:** Standard UVC / Ozone AOP

### HYDROPOOL HYDROGUIDE

#### ESTIMATED MONTHLY ELECTRICAL COSTS:

CANADA*	USA*	UK*	EUROPE*
\$10.65 - \$23.58	\$12.81 - \$28.36	£25.62 - £56.73	€21.84 - €48.35

\*Range based on a spa set point of 100°F/38°C, air temperature 45°F/7°C or 75°F/24°C. The cost is calculated using \$0.138 CDN, \$0.159 USD, £0.333, €0.283 cost per KWH calculations based on data compiled using CEC Title 20 test reports. The actual Monthly Cost will vary from these totals depending on variety of factors.



PHOTO COURTESY OF CK SPAS, SAINT-EUSTACHE, QUEBEC

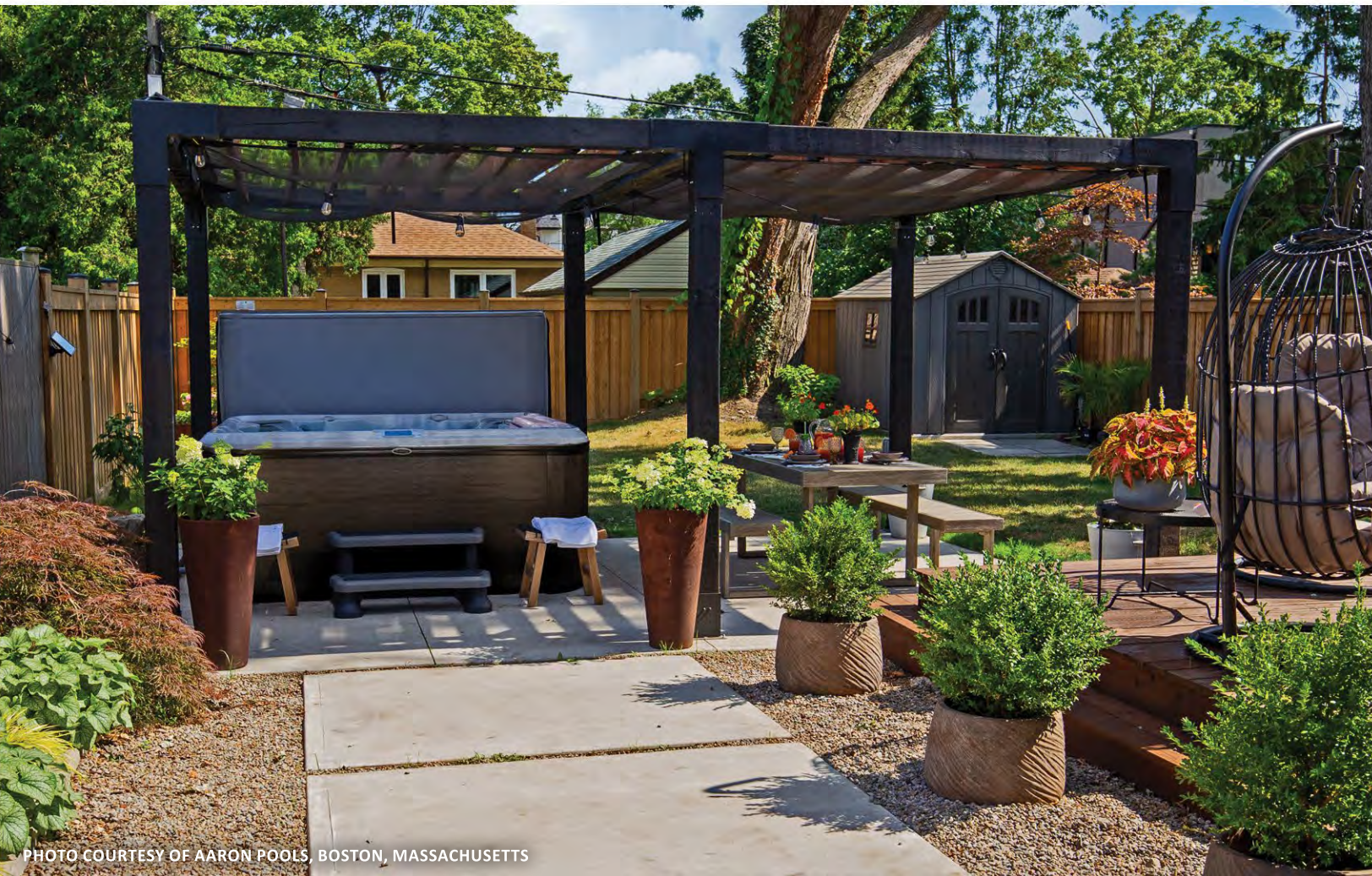


PHOTO COURTESY OF AARON POOLS, BOSTON, MASSACHUSETTS



## SIGNATURE **SELF-CLEANING**™+ 779

The 779 Signature Hot Tub has the best of everything, with room for up to seven adults and a variety of seat heights formed to fit diverse body types comfortably. With custom Wellness Zone jet configurations, this is the most popular one lounge hot tub in the Hydropool line-up. Experience the four zones, from soft rolling massages to a deep tissue release. Just press a button and let the hot tub massage take over to give you the only automated hydrotherapy experience in the industry.

Model 779 Platinum in Silver Marble shown here.

\* +/- tolerance of 1/4"

### 39" DEEP MODEL SPECS.

**SEATING:** 6-7 Person

**DIMENSIONS:** 90" x 90" x 39"\*

(228.6 cm x 228.6 cm x 99.06 cm) \*

**SPA VOLUME:** 397 US gal / 1,501 L

**DRY WEIGHT:** 940 lbs / 426 kg

**FILLED WEIGHT:** 4,248 lbs / 1,927 kg

**JETS: PLATINUM:** 55 Therapeutic Adjustable Jets

**ELECTRICAL: PLATINUM:** 240v - 50A NA / 230V - 32A EU

**HEATING: PLATINUM:** 4Kw NA / 3Kw EU

**PUMPS: PLATINUM:** 3hp & 4hp NA (60Hz) & EU (50Hz)

**INTERIOR LIGHTING:** Standard Multi-Colored LED

**PUREWATER AOP:** Standard UVC / Ozone AOP

### HYDROPOOL HYDROGUIDE

#### ESTIMATED MONTHLY ELECTRICAL COSTS:

CANADA*	USA*	UK*	EUROPE*
\$10.73 - \$23.76	\$12.91 - \$28.58	£25.82 - £57.15	€22.01 - €48.72

\*Range based on a spa set point of 100°F/38°C, air temperature 45°F/7°C or 75°F/24°C. The cost is calculated using \$0.138 CDN, \$0.159 USD, £0.333, €0.283 cost per KWH calculations based on data compiled using CEC Title 20 test reports. The actual Monthly Cost will vary from these totals depending on variety of factors.



## SIGNATURE **SELF-CLEANING**™+ 799

The Signature 799 Hot Tub is the only double lounge with room for up to eight adults, it offers the perfect blend of sore muscle relief and plenty of space to socialize.

This hot tub offers a luxurious experience and includes two Hydrotherapy Jet Pumps, honeymoon style loungers and diverse seat options sculpted to harmonize with your body.

Model 799 Platinum in Silver Marble shown here.

\* +/- tolerance of 1/4"

### 39" DEEP MODEL SPECS.

**SEATING:** 6-8 Person

**DIMENSIONS:** 90" x 90" x 39"\*

(228.6 cm x 228.6 cm x 99.06 cm) \*

**SPA VOLUME:** 366 US gal / 1,385 L

**DRY WEIGHT:** 1,030 lbs / 467 kg

**FILLED WEIGHT:** 4,082 lbs / 1,852 kg

**JETS: PLATINUM:** 64 Therapeutic Adjustable Jets

**ELECTRICAL: PLATINUM:** 240v - 50A NA / 230V - 32A EU

**HEATING: PLATINUM:** 4Kw NA / 3Kw EU

**PUMPS: PLATINUM:** 3hp & 4hp NA (60Hz) & EU (50Hz)

**INTERIOR LIGHTING:** Standard Multi-Colored LED

**PUREWATER AOP:** Standard UVC / Ozone AOP

### HYDROPOOL HYDROGUIDE

#### ESTIMATED MONTHLY ELECTRICAL COSTS:

CANADA*	USA*	UK*	EUROPE*
\$10.81 - \$23.94	\$13.00 - \$28.79	£26.01 - £57.59	€22.17 - €49.09

Model 799 not exactly as shown here.

\*Range based on a spa set point of 100°F/38°C, air temperature 45°F/7°C or 75°F/24°C. The cost is calculated using \$0.138 CDN, \$0.159 USD, £0.333, €0.283 cost per KWH calculations based on data compiled using CEC Title 20 test reports. The actual Monthly Cost will vary from these totals depending on variety of factors.



PHOTO COURTESY OF RAINBOW HOT TUBS, COLUMBUS, OHIO



PHOTO COURTESY OF CLAIR AZUR, CANNES, FRANCE

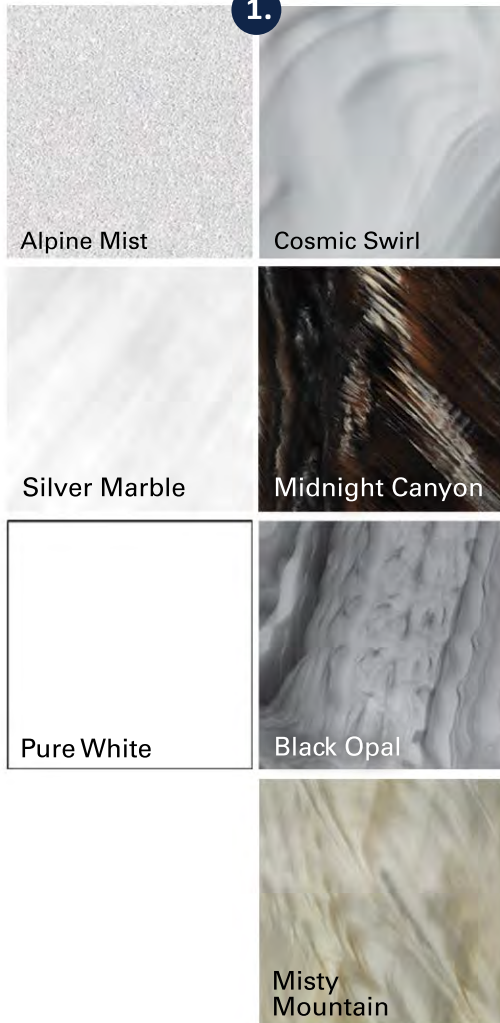


PHOTO COURTESY OF SOLAR SWIM, ORANGEVILLE, ONTARIO

# OPTIONS & UPGRADES

## 1. SHELL OPTIONS STANDARD ACRYLIC COLORS<sup>†</sup>

Your Hydropool Signature Hot Tub is available in these seven colors.



## 2. CABINET OPTION HYDROWISE CABINETRY WITH REMOVABLE PANELS

Your Signature Hot Tub comes in our maintenance-free HydroWise Cabinet finish. This premium quality cabinetry is installed onto a sturdy cradle substructure for the ultimate in durability and is embossed for the most realistic look possible. In the unlikely event that you require access to the plumbing or equipment, all four panels are removable for easy service access.



## 3. COVER OPTION EVERLAST HOT TUB COVERS

Protect and insulate your hot tub with this poly wovlen laminated vinyl cover able to withstand harsh winter months and is UV and mildew resistant. Designed to increase the longevity of your hot tub and retain the water temperature. Our covers include an extra thick full-length steam seal inside the fold to trap any excess heat preventing heat loss.

## OTHER POPULAR OPTIONS

### 4. iCOMMAND SYSTEM WORLD EDITION

The Smart Phone App is designed as a wireless hot tub control that allows you to pick the water care settings that fits your schedule, adjust filtration and temperature settings and create the ideal hot tub experience from anywhere in the world.



### 5. EZ ULTRA PURE OZONE SYSTEM

The system is designed for ozone to be added to keep the water clean<sup>†</sup>.



### 6. INDUSTRY-LEADING GUARANTEE

Hydropool Hot Tubs are built to stand the test of time and offer an industry leading guarantee package. For details inquire with your local Hydropool Retailer.



PHOTO COURTESY OF HYDROPOOL SCOTLAND, GLASGOW SCOTLAND

<sup>†</sup>Hot tub shell and cabinet colors may not be exactly as shown due to printing.

## LIGHTING OPTION

### 7. DELUXE LED & RADIANT LIGHTING

Enjoy the added convenience and reliability of the three extra interior lights and Radiant Trim Lighting which will illuminate your hot tub experience and accent your backyard. These lights are bright LED lights that sequence through blue, green & red colorations or can stay on your favorite of the three.

## COVER OPTIONS

### COVER LIFTER OPTIONS

All of our cover lifters are made in North America. Constructed of corrosion resistant aluminum brackets, each one has galvanized arms with comfort foam grips. All of our cover lifters are covered by a Limited Lifetime Manufacturer's Warranty.

### 8. STANDARD COVER REMOVER

Designed to work as a high or mid-mount these can be mounted to the side of the hot tub or deck mounted if the hot tub is set into the deck surround. For ease of installation this cover lifter is designed with patented sliding brackets.

### 9. UNDERMOUNT COVER REMOVER

Designed to work as a deck or surface mount, and can be installed using the weight of the hot tub to hold it in place. No screws, and no drilling into your hot tub cabinet is required. This cover lifter also is designed with patented sliding brackets.

### 10. HYDRAULIC COVER REMOVER PLUS

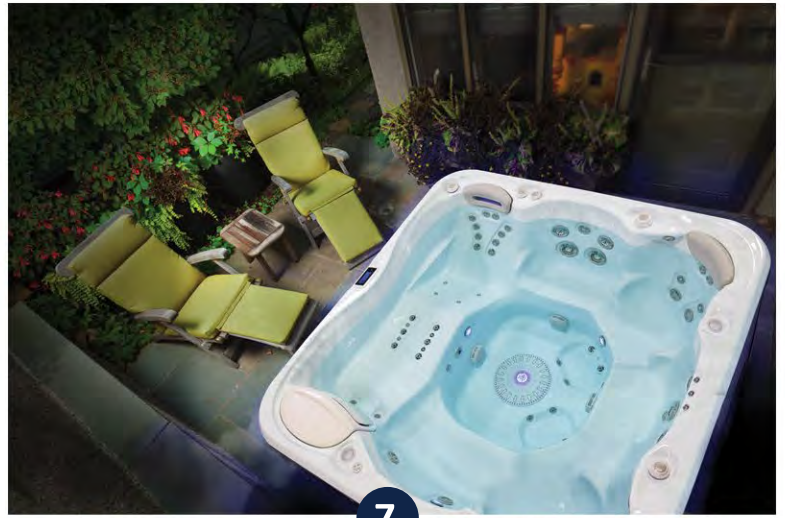
Lifts your hot tub cover with greater ease thanks to 80lb dual gas shocks and is designed to mount into your hot tubs cabinet. This cover lifter can also be used on hot tubs that are in-ground installations.

### 11. TWO TIER UNIVERSAL STEP

This option, a two tier step makes entering and exiting your hot tub safe and easy. These steps are available in matching Midnight, Driftwood or Espresso color finishes.

### 12. HEAT PUMP OPTION

This option will reduce the energy costs to run your hot tub dramatically.



7.



8.



9.



10.



12.



11.







# AVAILABLE OPTION PACKAGES

## **1 OASIS PACKAGE**

### **TWO PREMIUM HYDROFALL PILLOWS**

The adjustable “Waterfall Jet” helps release the body’s natural endorphins that act as a natural pain suppressor by helping to relieve stress, headaches and pain.

### **Deluxe LED Lighting & Radiant Lighting**

Enjoy the added convenience and reliability of the three extra interior lights and Radiant trim Lighting which will illuminate your hot tub experience and accent you backyard.

## **2 NORTHERN FALLS PACKAGE**

### **NORTHERN LIGHTS**

Strategically placed LED lights provide lighting that illuminates all of the top mounted control valves; brilliantly colored and sequence through a range of colors when turned on and can be locked on to one color.

### **CASCADING HYDROFALLS**

The HydroFalls package includes three Laminar fountain jets that are illuminated with brilliant color sequencing LED lights.

## **3 CHROMATHERAPY PACKAGE**

### **NORTHERN LIGHTS**

Strategically placed LED lights provide lighting that illuminates all of the top mounted control valves. These are brilliantly colored and sequence through a range of colors when turned on or be locked onto your favorite.

### **DELUXE LED LIGHTING & RADIANT LIGHTING**

Enjoy the added convenience and reliability of the three extra interior lights and Radiant trim Lighting which will illuminate your hot tub experience and accent you backyard.

## **4 HYDROTHERAPY PACKAGE\***

### **HYDROFLEX AIR THERAPY PACKAGE**

HydroFlex Air Therapy System 10,000 perfectly aimed heated air bubbles apply ideal pressure to provide you with a truly complete therapeutic massage.

### **HYDROTHER LIGHTING SYSTEM**

When you purchase the Hydrotherapy Package, zone therapy lighting is now included! That means there will be no guess work on what seat to sit in for the best massage experience. The Hydrother Lighting will turn on to indicate which seat is the next to sit in, when activating the Hydrother Program.

\* Only available on Platinum Series.

1



2



3



4



\* Only available on Platinum Series.



IT IS TIME  
YOU FOUND  
SERENITY





# SERENITY HOT TUBS ARE BUILT TO LAST FROM THE GROUND UP

Hydropool introduces an all new redesigned cabinet and frame. The new Everlast Frame cradles the all Edgewater Shell and it all sits on a Polymer Insulated Floor sealing in the acrylic shell, cabinet and frame.

This creates a completely sealed system that keeps the heat in and the cold out in the winter. In the summer, heat can be released and regulated by the EcoHeat Exchange fully adjustable venting.

## 1. POLYMER INSULATED FLOOR THE BASE OF THE WEATHERSEAL INSULATION SYSTEM

- Fully sealed base to lock the heat in keep the cold out.

## 2. UNIBODY FRAME THE STRONGEST FRAME IN THE INDUSTRY

- Specifically engineered to hold the weight of the water. while
- Adjusts to the heating and cooling that comes with summers and winters.

## 3. EDGEWATER SHELL BUILT TO BE COMPLETELY WATERPROOF

- The polyester and vinylester resin are combined with fiberglass to add strength.
- Creating the strongest shell in the industry.





5.

#### 4. HYDROWISE THERMAL BLANKETS NASA INSPIRED TECHNOLOGY

- Reflects the residual heat of the pumps, shell and plumbing back into the hot tub.
- Heater does not need to turn on as often, saving you money.
- Ranked as one of the most energy efficient hot tubs in the world by the state of California.

*Please Consult our Hydrowise Energy Guide.*

#### 5. WEATHERSEAL CABINET REFLECTS RADIANT HEAT

- Locks in the waste heat given off by pumps and heater by reflecting radiant heat inside cabinetry of the hot tub.
- The cabinet panels can be easily removed for access on all sides of the hot tub.

#### ECOHEAT EXCHANGE TECHNOLOGY

- Help control the temperature of the hot tub without the heater ever coming on.
- The fully adjustable HydroWise Thermal Vents maximize energy efficiency for any season and any climate.

#### 6. HYBRID HEAT ADVANTAGE SAVING YOU MONEY

The combination of insulation materials allows our WeatherSeal Insulation System to capture the radiant heat from the plumbing and equipment, significantly reducing energy consumption.

#### HYDROWISE VINYL COVER

- Heavy duty tapered locking safety hard cover.
- Most energy efficient hardcover in the industry.
- Locks on both sides to keep animals out and children safe. Can be easily removed for access on all sides of the hot tub.



6.



1.

# THE SERENITY HOT TUB CLEARSPRING FILTRATION SYSTEM

This system for Serenity Hot Tubs is a three-stage filtration that keeps water cleaner† and clearer. The first stage is the Ultra Flow Grill with its Catch Barrier. This prevents debris from re-entering the hot tub. The second stage Skimmer Net traps large debris before reaching the filter cartridge. The new ClearSpring Filtration System, with its much larger surface area, filters more water than ever before. It's made out of micro-fiber and contains a dense inner core that traps the smallest particles and holds them. Clean and healthy spa water is the foundation of all Serenity Hot Tubs. You can enjoy the cleanest water with the easiest system to operate and maintain your Serenity Hot Tub's performance.

## 1. ULTRA FLOW GRILL

Allows maximum flow of water, quickly removing debris from the hot tub water. The Catch Barrier prevents debris from re-entering the hot tub.

## 2. ULTRA FLOW SKIMMER NET

The skimmer net eliminates the need to skim the surface and is the first line of defence. Catches any and all debris too large for filter to catch.

## 3. DUAL FILTRATION

This dual design maximizes the surface area and captures debris more efficiently. It can be easily accessed, yet hidden from eye sight and has a built-in water care dispenser.

## 4. EVERGREEN PUMP

Filters 87 US Gallons of spa water per minute and has an energy efficient design.

2.



3.



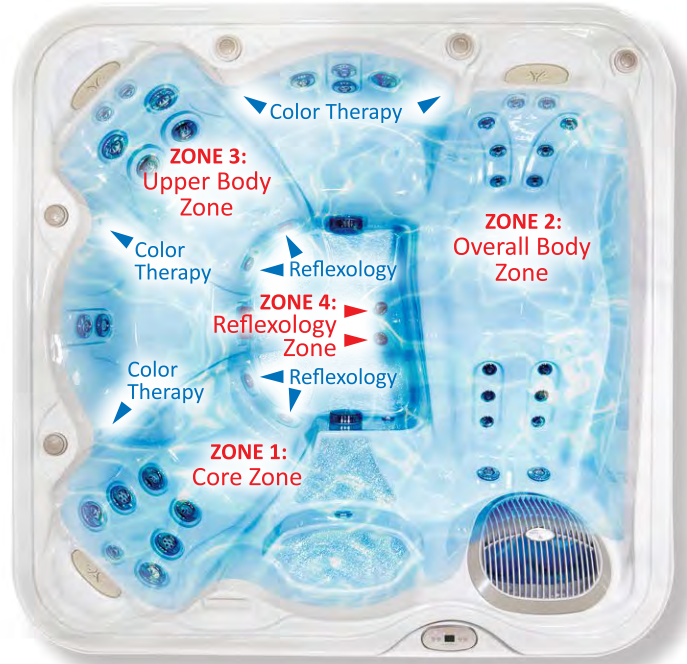
4.





# SCIENCE OF IMMERSION IN A SERENITY HOT TUB

Through our understanding of Zone Hydrotherapy and ergonomics of the human body, Hydropool has taken the Science of Immersion to the next level. We have constantly innovated to create a line of hot tub that uses Zone Therapy as its method to interact with the human body in the most natural and effective way possible. Hydropool Zone Therapy is designed around you and your usage of the hot tub to help you benefit from a general sense of well-being. We are all unique individuals genetically and have varying lifestyles that all play a role in defining our sensitivity to a release of various tensions.



## ZONE THERAPY:

Each zone is designed to massage a specific part of your body:

### ZONE 1: CORE ZONE

ACTIVATION OF THE  
PARAVERTEBRAL  
MUSCLES

Vertebral fatigue contributes to headaches. This zone releases tension in the Dorsal Muscles.

### ZONE 2: OVERALL ZONE

ACTIVATION OF LEG &  
LUMBAR MUSCLES

Promotes improved circulation in the lower part of the body and allows for venous return and lightened legs.

### ZONE 3: UPPER BACK ZONE

ACTIVATION OF UPPER  
BACK, NECK AND  
SHOULDER MUSCLES

Eliminates tension in trapezoid muscles and neck by releasing tensions in Solar Plexus area.

### ZONE 4: REFLEXOLOGY

ACTIVATION OF FOOT  
ARCH MUSCLES

Deeply massages the small venous areas in your foot arch offering relief as your feet take the brunt of most sports.



## EACH ZONE HAS FOUR FEATURES, DESIGNED TO MAXIMIZE YOUR HYDROTHERAPY:

### 1. TYPE OF JETS

The type of jet is crucial to a proper massage. Our jets are designed purposely for a deep tissue massage

### 2. JET PLACEMENT

Our hydrotherapy jets are specifically designed for each zone so that the superior benefits of hydrotherapy are achieved. Our different jet patterns are designed to work different muscle groups.

### 3. SEATING DESIGNED AROUND YOU

Designed to work with your body's natural structure and functions to provide maximum comfort and functionality. Our ergonomic seats support the skeletal structure so that the muscular system does not have to; it removes stress from muscles and joints and allows the body to relax.

### 4. DURATION IN SEAT

The last component of Zone Therapy is the duration of time that a person spends in each seat (Zone) of the hot tub. The duration in seat combined with the sequence of seats is critical to the performance of the Zone Therapy.



# SERENITY HOT TUB COLLECTION

If you want elegant styling and exceptional performance, check out the Serenity Collection. You'll learn what makes these spas special, including unique massages, spacious interiors and a range of models that fit from four to seven adults. Plus, you can count on legendary Hydromassage quality, WeatherSeal Insulation, and innovative water care options, like the PureWater System that helps you spend less time caring for your spa, and more time enjoying it.



# AT A GLANCE

## MODEL 4300



36" DEEP MODEL:  
SEATING: 3 Person  
TOTAL ALL ACTIVE  
THERAPY JETS: 31

## MODEL 4500



36" DEEP MODEL:  
SEATING: 4 Person  
TOTAL ALL ACTIVE  
THERAPY JETS: 33

## MODEL 5900



36" DEEP MODEL:  
SEATING: 5 Person  
TOTAL ALL ACTIVE  
THERAPY JETS: 41

## MODEL 6600



36" DEEP MODEL:  
SEATING: 6 Person  
TOTAL ALL ACTIVE  
THERAPY JETS: 31

## MODEL 6800



36" DEEP MODEL:  
SEATING: 6 Person  
TOTAL ALL ACTIVE  
THERAPY JETS: 41

## MODEL 6900



36" DEEP MODEL:  
SEATING: 6 Person  
TOTAL ALL ACTIVE  
THERAPY JETS: 51





## THE SERENITY 4300

The next level of affordable luxury is this popular rectangle-shaped hot tub. Perfect for four people, this model has contoured seating for three and one Never-Float Lounger. Your closest friends and family can now relax and enjoy a new kind of happy hour. The Serenity 4300 features our exclusive WeatherSeal Insulation and state of the art massage wellness programs.

### 36" DEEP MODEL SPECS.

**SEATING:** 3 Person

**DIMENSIONS:** 85" x 62" x 36"\*  
(215.9 cm x 157.48 cm x 91.44 cm) \*

**SPA VOLUME:** 243 US gal / 925 L

**DRY WEIGHT:** 526 lbs / 239 kg

**FILLED WEIGHT:** 2,564 lbs / 1,163 kg

**JETS:** 31 Therapeutic Adjustable Jets

**ELECTRICAL:** 240v - 40A NA / 230V - 20A EU

**HEATING:** 4Kw NA / 3Kw EU

**PUMPS:** 4hp NA (60Hz) & EU (50Hz)

**INTERIOR LIGHTING:** Standard Multi-Colored LED

Silver Marble shown here.

\* +/- tolerance of 1/4"

### HYDROPOOL HYDROGUIDE

#### ESTIMATED MONTHLY ELECTRICAL COSTS:

CANADA*	USA*	UK*	EUROPE*
\$10.07 - \$22.28	\$11.60 - \$25.67	£24.22 - £53.59	€20.64 - €45.68

\*Range based on a spa set point of 100°F/38°C, air temperature 45°F/7°C or 75°F/24°C. The cost is calculated using \$0.138 CDN, \$0.159 USD, £0.333, €0.283 cost per KWH calculations based on data compiled using CEC Title 20 test reports. The actual Monthly Cost will vary from these totals depending on variety of factors.



## THE SERENITY 4500

Step into the seats that provide you with the luxury experience you deserve. Our High Flo Low Pressure jets will give you a full body massage and guarantee the best hydrotherapy session in your own backyard. Comfortably rejuvenate in a hot tub where each seat can target different pressure point as the jet placement varies. This spa melts away your stress as you rest your head against the soft pillows.

### 36" DEEP MODEL SPECS.

**SEATING:** 4 Person

**DIMENSIONS:** 80" x 80" x 36"\*  
(203.2 cm x 203.2 cm x 91.44 cm) \*

**SPA VOLUME:** 309 US gal / 1,176 L

**DRY WEIGHT:** 585 lbs / 265 kg

**FILLED WEIGHT:** 3,176 lbs / 1,441 kg

**JETS:** 33 Therapeutic Adjustable Jets

**ELECTRICAL:** 240v - 40A NA / 230V - 20A EU

**HEATING:** 4Kw NA / 3Kw EU

**PUMPS:** 4hp NA (60Hz) & EU (50Hz)

**INTERIOR LIGHTING:** Standard Multi-Colored LED

Silver Marble shown here.

\* +/- tolerance of 1/4"

### HYDROPOOL HYDROGUIDE

#### ESTIMATED MONTHLY ELECTRICAL COSTS:

CANADA*	USA*	UK*	EUROPE*
\$6.57 - \$14.54	\$7.57 - \$16.75	£15.80 - £34.97	€13.47 - €29.81

\*Range based on a spa set point of 100°F/38°C, air temperature 45°F/7°C or 75°F/24°C. The cost is calculated using \$0.138 CDN, \$0.159 USD, £0.333, €0.283 cost per KWH calculations based on data compiled using CEC Title 20 test reports. The actual Monthly Cost will vary from these totals depending on variety of factors.





## THE SERENITY 6600

This high-performance model offers a wide variety of state-of-the-art jets, including the wellness programs, to effectively target muscles that need rehabilitation. It features a wide open seating with lots of foot room and the Clear Spring Filtration provides worry-free operation and crystal-clear spa water to enjoy hours of hydrotherapy and relaxation.

### 36" DEEP MODEL SPECS.

**SEATING:** 6 Person

**DIMENSIONS:** 80" x 80" x 36"\*

(203.2 cm x 203.2 cm x 91.44 cm) \*

**SPA VOLUME:** 309 US gal / 1,176 L

**DRY WEIGHT:** 585 lbs / 265 kg

**FILLED WEIGHT:** 3,176 lbs / 1,441 kg

**JETS:** 31 Therapeutic Adjustable Jets

**ELECTRICAL:** 240v - 40A NA / 230V - 20A EU

**HEATING:** 4Kw NA / 3Kw EU

**PUMPS:** 4hp NA (60Hz) & EU (50Hz)

**INTERIOR LIGHTING:** Standard Multi-Colored LED

Silver Marble shown here.

\* +/- tolerance of 1/4"

### HYDROPOOL HYDROGUIDE

#### ESTIMATED MONTHLY ELECTRICAL COSTS:

CANADA*	USA*	UK*	EUROPE*
\$9.37 - \$20.75	\$10.80 - \$23.90	£22.54 - £49.91	€19.22 - €42.55

\*Range based on a spa set point of 100°F/38°C, air temperature 45°F/7°C or 75°F/24°C. The cost is calculated using \$0.138 CDN, \$0.159 USD, £0.333, €0.283 cost per KWH calculations based on data compiled using CEC Title 20 test reports. The actual Monthly Cost will vary from these totals depending on variety of factors.



## THE SERENITY 5900

Refresh and rejuvenate in this state-of-the-art hot tub that can fit up to five people. Treat yourself to a high-impact, full body massage with our exclusive wellness programs. Each jet is carefully placed to get you the most out of your hydrotherapy session, which is designed to relieve tired and sore muscles. Our full-size lounge and captain seat are customized to hug your body, leaving you feeling stress-free and relaxed.

### 36" DEEP MODEL SPECS.

**SEATING:** 5 Person

**DIMENSIONS:** 85.5" x 85.5" x 36"\*

(217.17 cm x 217.17 cm x 91.44 cm) \*

**SPA VOLUME:** 403 US gal / 1,533 L

**DRY WEIGHT:** 669 lbs / 304 kg

**FILLED WEIGHT:** 4,048 lbs / 1,837 kg

**JETS:** 41 Therapeutic Adjustable Jets

**ELECTRICAL:** 240v - 50A NA / 230V - 32A EU

**HEATING:** 4Kw NA / 3Kw EU

**PUMPS:** 3hp & 4hp NA (60Hz) & EU (50Hz)

**INTERIOR LIGHTING:** Standard Multi-Colored LED

Silver Marble shown here.

\* +/- tolerance of 1/4"

### HYDROPOOL HYDROGUIDE

#### ESTIMATED MONTHLY ELECTRICAL COSTS:

CANADA*	USA*	UK*	EUROPE*
\$12.04 - \$26.67	\$13.87 - \$30.73	£28.97 - £30.73	€24.69 - €54.69

\*Range based on a spa set point of 100°F/38°C, air temperature 45°F/7°C or 75°F/24°C. The cost is calculated using \$0.138 CDN, \$0.159 USD, £0.333, €0.283 cost per KWH calculations based on data compiled using CEC Title 20 test reports. The actual Monthly Cost will vary from these totals depending on variety of factors.



PHOTO COURTESY OF CK SPAS, SAINT-EUSTACHE, QUEBEC





## THE SERENITY 6800

Comfortably fits up to six adults and includes features such as our Zone Therapy Wellness Programs with jets positioned throughout the spa to target specific muscle groups. The dedicated captain's chair is sculpted to cradle your body. You're all set for the ultimate in relaxation, comfort, and style while soaking sore muscles back to life.

### 36" DEEP MODEL SPECS.

**SEATING:** 6 Person

**DIMENSIONS:** 85.5" x 85.5" x 36"\*  
(217.17 cm x 217.17 cm x 91.44 cm) \*

**SPA VOLUME:** 376 US gal / 1,430 L

**DRY WEIGHT:** 655 lbs / 297 kg

**FILLED WEIGHT:** 3,807 lbs / 1,727 kg

**JETS:** 41 Therapeutic Adjustable Jets

**ELECTRICAL:** 240v - 50A NA / 230V - 32A EU

**HEATING:** 4Kw NA / 3Kw EU

**PUMPS:** 3hp & 4hp NA (60Hz) & EU (50Hz)

**INTERIOR LIGHTING:** Standard Multi-Colored LED

Silver Marble shown here.

\* +/- tolerance of 1/4"

### HYDROPOOL HYDROGUIDE

#### ESTIMATED MONTHLY ELECTRICAL COSTS:

CANADA*	USA*	UK*	EUROPE*
\$12.79 - \$28.32	\$14.73 - \$32.63	£30.76 - £68.13	€26.22 - €58.07

\*Range based on a spa set point of 100°F/38°C, air temperature 45°F/7°C or 75°F/24°C. The cost is calculated using \$0.138 CDN, \$0.159 USD, £0.333, €0.283 cost per KWH calculations based on data compiled using CEC Title 20 test reports. The actual Monthly Cost will vary from these totals depending on variety of factors.



## THE SERENITY 6900

Equipped with a full-size lounge and captain seat shaped to your body, leaving you to feel stress-free and relaxed. This hot tub easily fits up to six adults. Therapy Jets are placed throughout the spa and designed to target specific muscle groups and work with our zone therapy wellness programs. The ClearSpring Filtration provides worry-free operation and crystal-clear spa water for you to enjoy hours of soaking, hydrotherapy, and relaxation.

### 36" DEEP MODEL SPECS.

**SEATING:** 6 Person

**DIMENSIONS:** 91" x 91" x 36"\* (231.14 cm x 231.14 cm x 91.44 cm) \*

**SPA VOLUME:** 429 US gal / 1,632 L

**DRY WEIGHT:** 712 lbs / 323 kg

**FILLED WEIGHT:** 4,308 lbs / 1,955 kg

**JETS:** 51 Therapeutic Adjustable Jets

**ELECTRICAL:** 240v - 50A NA / 230V - 32A EU

**HEATING:** 4Kw NA / 3Kw EU

**PUMPS:** 3hp & 4hp NA (60Hz) & EU (50Hz)

**INTERIOR LIGHTING:** Standard Multi-Colored LED

Silver Marble shown here.

\* +/- tolerance of 1/4"

### HYDROPOOL HYDROGUIDE

#### ESTIMATED MONTHLY ELECTRICAL COSTS:

CANADA*	USA*	UK*	EUROPE*
\$16.89 - \$37.41	\$19.46 - \$43.10	£40.64 - £90.00	€34.64 - €76.72

\*Range based on a spa set point of 100°F/38°C, air temperature 45°F/7°C or 75°F/24°C. The cost is calculated using \$0.138 CDN, \$0.159 USD, £0.333, €0.283 cost per KWH calculations based on data compiled using CEC Title 20 test reports. The actual Monthly Cost will vary from these totals depending on variety of factors.





PHOTO COURTESY OF CK SPAS, SAINT-EUSTACHE, QUEBEC





## YOU HAVE OPTIONS WITH YOUR SERENITY HOT TUB

### 1. SERENITY MOONFALL PACKAGE

Consists of two great options combined...

#### A. AQUABLADE WATERFALL FEATURE

Features two pop-up waterfall jets that create a beautiful cascading blade of water into your Serenity Hot Tub. These also light-up in conjunction with the Moon Lighting feature and sequence through blue, green and red colorations or can stay on your favorite color.

#### B. MOON LIGHTING

*(Cabinet Corner Lighting Feature)*

This LED Corner Lighting System illuminates the surroundings and details of the spa's exterior. Enjoy the added convenience and reliability of premium lighting, with bright LED lights that sequence through blue, green and red colorations. The interior LED Lights illuminate the seating area and can series through the various colors, or can be locked on to one.

### 2. HYDROFLEX AIR THERAPY PACKAGE

HydroFlex Air Therapy System 10,000 perfectly aimed heated air bubbles apply ideal pressure to provide you with a truly complete therapeutic massage.



### 3. iCOMMAND SYSTEM WORLD EDITION

A Smart Phone App that is designed as a wireless hot tub control. This allows you to change water care settings and adjust filtration and temperature from wherever you are.

### 4. EZ ULTRA PURE OZONE SYSTEM

The system is designed for ozone to be added to keep the water clean†.

### 5. HYDROPOOL PUREWATER SYSTEM

Designed to keep your Hydropool Hot Tub water clean†and clear the way nature intended.

### 6. TWO TIER UNIVERSAL STEP

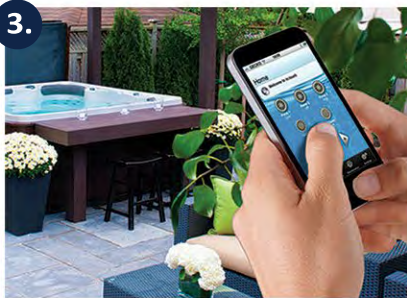
This option, a two tier step makes entering and exiting your hot tub safe and easy. This Two Tier Step, are available in matching Midnight, Driftwood or Espresso color finishes.

### 7. STANDARD ACRYLIC COLORS

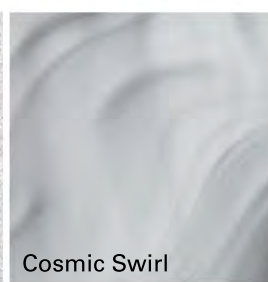
Your Hydropool Serenity Hot Tub is available in a wide range of colors.

### 8. STANDARD CABINET COLORS

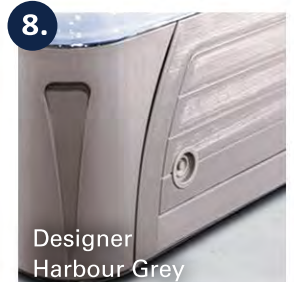
Your Serenity Model 4300, 4500, 5900, 6600, 6800 and 6900 hot tubs all come in your choice of two colors: Designer Harbor Grey and Designer Driftwood.



Alpine Mist



Cosmic Swirl



Designer Harbour Grey



Silver Marble



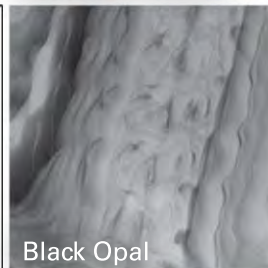
Midnight Canyon



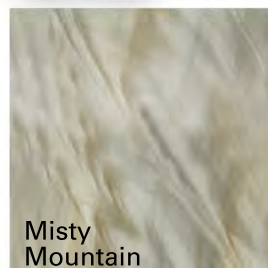
Designer Driftwood



Pure White



Black Opal



Misty Mountain



## OUR HISTORY WITH WATER

Over 40 years ago, a father and son had a vision that the power of water could play an instrumental role in a family's everyday life. With their extensive background and knowledge in the swimming pool industry, they decided to expand their business to include both hot tubs and swim spas.

They started as retailers with a company called California Spa, Sauna and Fitness in 1978. This was the very first retailer of hot tubs in Eastern Canada. It was there that Dale and Fred developed their love for the retail side of the business. Quickly realizing the potential for hot tubs, Hydropool was formed in 1980. It quickly became one of the largest manufacturers of hot tubs in North America.

In 1995, Hydropool saw the potential of swim spas, and started to manufacture its first product, the AquaTrainer. Hydropool's growth worldwide has now reached over 400 independent retailers in 60 countries. Hydropool recently added a new 66,000 sq. ft. swim spa manufacturing facility and a new 101,000 sq. ft. parts distribution warehouse. This allows Hydropool to continue to expand to successfully meet all of our consumers' needs. Each of our retailers are professionally trained to assist in selecting your ideal hot tub or swim spa to match your budget and lifestyle needs.

Hydropool Hot Tubs and Swim Spas are manufactured in Mississauga, Ontario Canada, by experienced designers and engineers. We're always striving to exceed our customer's expectations.



**HYDROPOOL**  
hot tubs • swim spas

**THE WATER IS CALLING.**



# SHARING THE POWER OF WATER AROUND THE GLOBE

We have been sharing our creations and innovations with water through our worldwide network of retailers for more than 40 years.

[www.hydropoolhottubs.com](http://www.hydropoolhottubs.com)

Algeria	Germany	Reunion Island
Australia	Greece	Romania
Austria	Guadeloupe	Saudi Arabia
Barbados	Hungary	Scotland
Belarus	Iceland	Serbia
Belgium	Indonesia	Singapore
Bermuda	Ireland	Slovak Republic
Brazil	Israel	Spain
Bulgaria	Italy	St. Barts
Canada	Korea	Saint Martin
Cayman Islands	Latvia	Sweden
China	Lithuania	Switzerland
Croatia	Luxembourg	Thailand
Cyprus	Malta	Turkey
Czech Republic	Mexico	Ukraine
Denmark	Monaco	United States
Dubai	Morocco	Wales
Dutch Caribbean	Netherlands	
England	New Caledonia	
Estonia	Northern Ireland	
Finland	Norway	
France	Poland	
French Polynesia	Portugal	
	Qatar	



---

**HYDROPOOL**  
hot tubs • swim spas

**THE WATER IS CALLING**

---








PHOTO COURTESY OF CLAIR AZUR, PARIS, FRANCE

Your Authorized Hydropool Retailer is:

  
**HYDROPOOL**  
hot tubs · swim spas  
**THE WATER IS CALLING**

**HYDROPOOL INC. TEL: 905.565.6810**  
**TOLL FREE: 1.800.465.2933**  
**EMAIL: info@hydropoolhottubs.com**

 @hydropoolhottubsandswimspas  
 @hydropoolhottubsandswimspas  
 @Hydropool

\*Clean is defined as the removal of microscopic (down to 3 µm level, varies by model) debris from the water. Ozone aids in the grouping of small debris. Once combined, the debris can be more easily caught by the filtration process.

For more energy rating and HydroGuide information, please refer to our web site at [www.hydropoolhottubs.com](http://www.hydropoolhottubs.com).  
Specifications & Options Subject To Change Without Notice. HTCLL2024E-0111 © 2024 Hydopool Hot Tubs Inc.